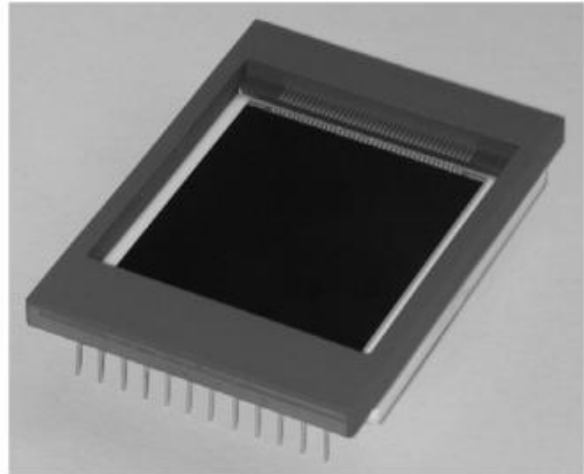


e2v

CCD42-40 NIMO Back Illuminated High Performance CCD Sensor

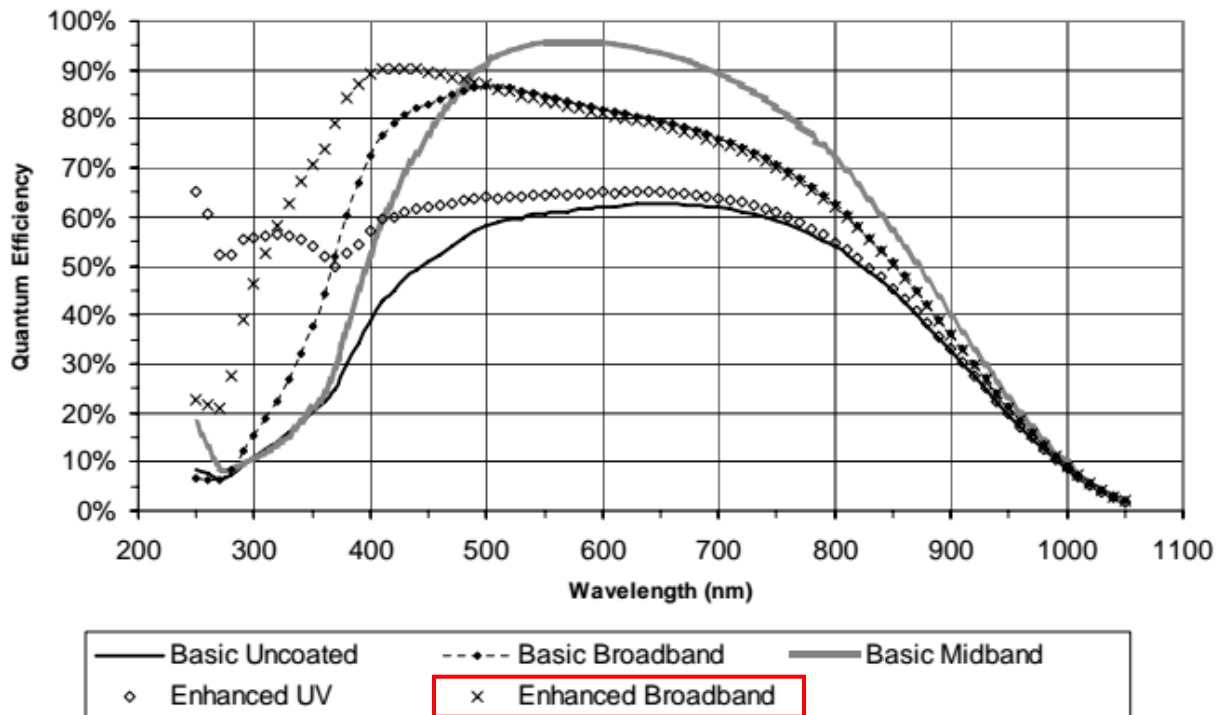
FEATURES

- 2048 by 2048 pixel format
- 13.5 mm square pixels
- Image area 27.6 x 27.6 mm
- Back Illuminated format for high quantum efficiency
- Full-frame operation
- Symmetrical anti-static gate protection
- Very low noise output amplifiers
- Dual responsivity output amplifiers
- Wide dynamic range for 15-bit operation
- Gated dump drain on output register
- 100% active area



TYPICAL SPECTRAL RESPONSE (At -30 °C, no window)

Standard Silicon



CCD's del OAN: Marconi-2, Spectral-1 y Spectral-2